

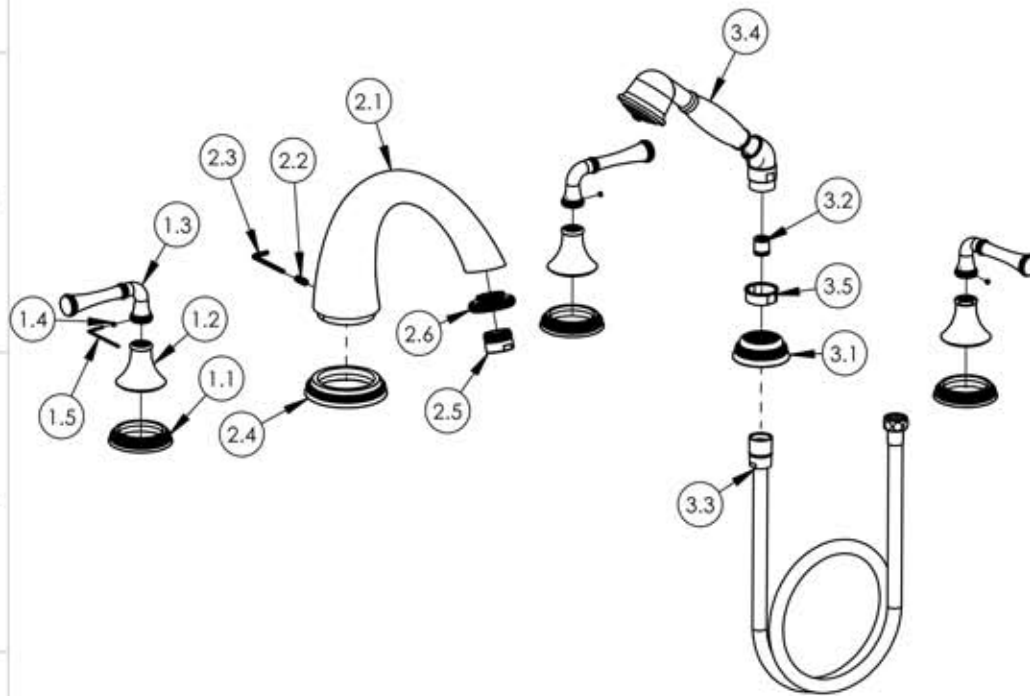
A

B

C

D

E



ITEM NO.	PART NUMBER	DESCRIPTION	QTY.
1	3-317/00	LEVER HANDLE, COINED SERIES	3
1.1	10978/00	ESCUTCHEON HANDLE BASE COINED, 3RING, COINED SERIES	1
1.2	10972/00	HUB, TRANSITIONAL 3RING	1
1.3	10977/00	HANDLE, STRAIGHT LEVER COINED, 3RING	1
1.4	92163	SET SCREW, CONE PT 8-32 X 1/8" L	1
1.5	P39001	HEX KEY 5/64, FOR 8-32 SET SCREW	1
2	3-320/00	DECK TUB SPOUT, P27020 SPOUT, COINED SERIES	1
2.1	P27020/00	K5120 DECK SPOUT	1
2.2	92202	SET SCREW M6X1.0 X 16MM	1
2.3	P39005	3MM HEX KEY	1
2.4	11120/00	ESCUTCHEON, COINED DECK SPOUT	1
2.5	P05003	AERATOR & HOUSING, M28	1
2.6	11117/00	RING HOUSING AERATOR M28X1, COINED 3RING	1
3	4-138/00	HAND SHOWER K6560, W/ COINED DECK BRACKET & HOSE	1
3.1	11118/00	COINED DECK BRACKET, HAND SHOWER, COINED SERIES	1
3.2	P15006	FLOW REGULATION CHECK VALVE	1
3.3	P15008/00	HOSE, 1/2" BY 59" LENGTH	1
3.4	K6560/00	HAND SHOWER	1
3.5	P35316	BLACK PLASTIC INSERT, HANDSHOWER	1

ZONE	REV.	DESCRIPTION	DATE	APPROVED
REVISIONS				
1261 LOGAN AVENUE COSTA MESA, CALIFORNIA 92626		PHYLIRICH®	PROPRIETARY AND CONFIDENTIAL	
PHONE: 714.361.4800 FAX: 714.617.3120			THE INFORMATION CONTAINED IN THIS DRAWING IS THE SOLE PROPERTY OF R3S MANUFACTURING. ANY REPRODUCTION IN PART OR AS A WHOLE WITHOUT THE WRITTEN PERMISSION OF R3S MANUFACTURING IS PROHIBITED.	
Defining Luxury Since 1959				

-		-		INTERPRET GEOMETRIC DIMENSIONING & TOLERANCING IN ACCORDANCE WITH ASME Y14.5-2009 & ASME Y14.41-2003 STANDARDS, UNLESS OTHERWISE SPECIFIED. DIMENSIONS ARE IN INCHES. TOLERANCES ARE:			DECK TUB W/ HAND SHOWER		
NEXT ASSY		USED ON		FRACTIONS ±1/64"	DECIMALS X.X: ±.1 X.XX: ±.01 X.XXX: ±.005	ANGULAR ±.5°			
APPLICATION							A	208-48/00	-
MATERIAL									
FINISH				DRAWN	LLO	9/23/2015			
DO NOT SCALE DRAWING				CHECKED	GRE		SCALE: 1:7.5	WEIGHT: lbs.	SHEET 1 OF 2

5

4

3

2

1